

INSTALLATION INSTRUCTIONS

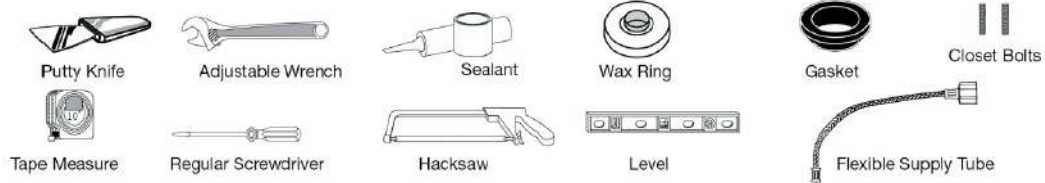
Wall Hung Dual Flush Toilet with Seat

Thank you for selecting our product. To ensure this product is installed properly, please read these instructions carefully before you begin. (Certain installations may require professional help.) Also be sure your installation conforms to local codes

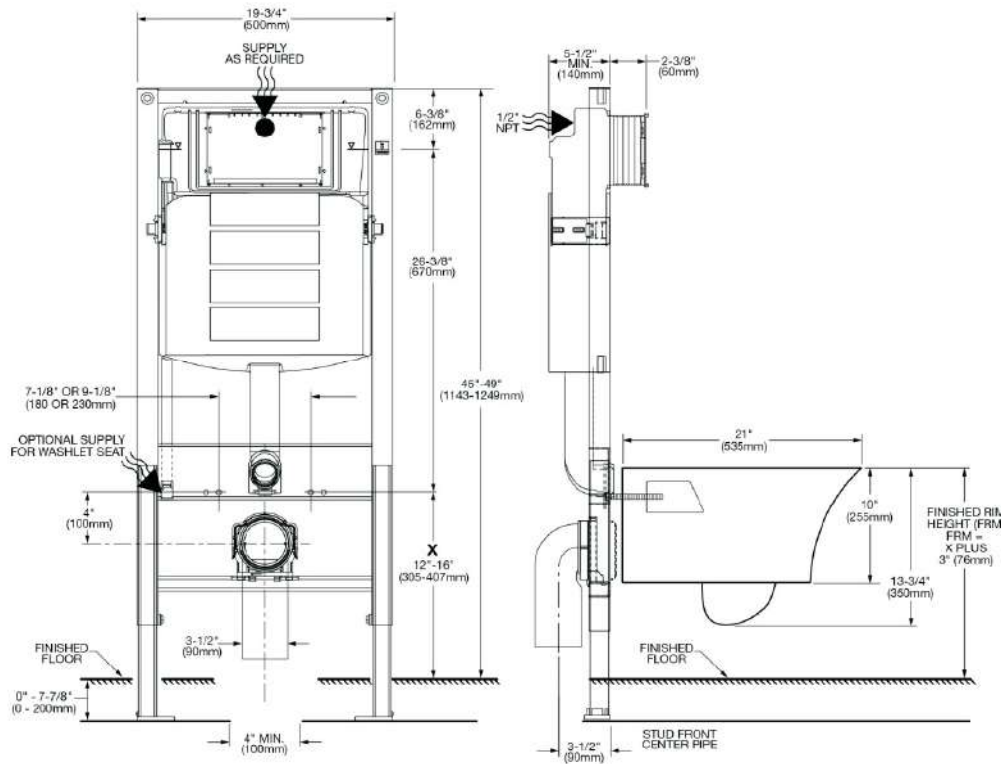
CAUTION: PRODUCT IS FRAG **ID POSSIBLE INJURY HANDLE WITH CARE!**
NOTE: Pictures may not exactl, china and components.

RECOMMENDED TOOLS AND MATERIALS

Most of the procedures require the use of common tools and materials, which are available from hardware and plumbing, supply stores. It is essential that the tools and materials be on hand before work is begun.



1 ROUGHING-IN DIMENSIONS



SAVE FOR FUTURE USE

FOR A BATH THAT'S
FLUSH WITH STYLE

Immerse yourself in clean, green luxury with Fine Fixtures' ultramodern wall-hung toilets in the new Nebula™ collection. Our vision of efficiency and space-saving style, each model mounts to the wall with hidden plumbing for a sleek, compact appearance. For the perfect pairing, you can also select our powerful Vortex™ double-swish toilet bowl technology that delivers deeper sanitation while conserving water, reducing clogging, and polishing bowls to a pristine clean. Add soft-close seats and self-clean glazing, and your bath becomes home's centerpiece.

UNDERSTANDING OUR
VORTEX™ DOUBLE-SWISH

Fine fixtures' pioneering Vortex™ technology promises maximum performance while maintaining modernist efficiency. Rimless bowls feature powerful washdown jets that direct water in a consistent cyclonic stream. The result is double the clean with every single flush.



REVOLUTIONARY
DESIGN

Wall-hung toilet units feature powerful Vortex™ technology built right into the bowl.



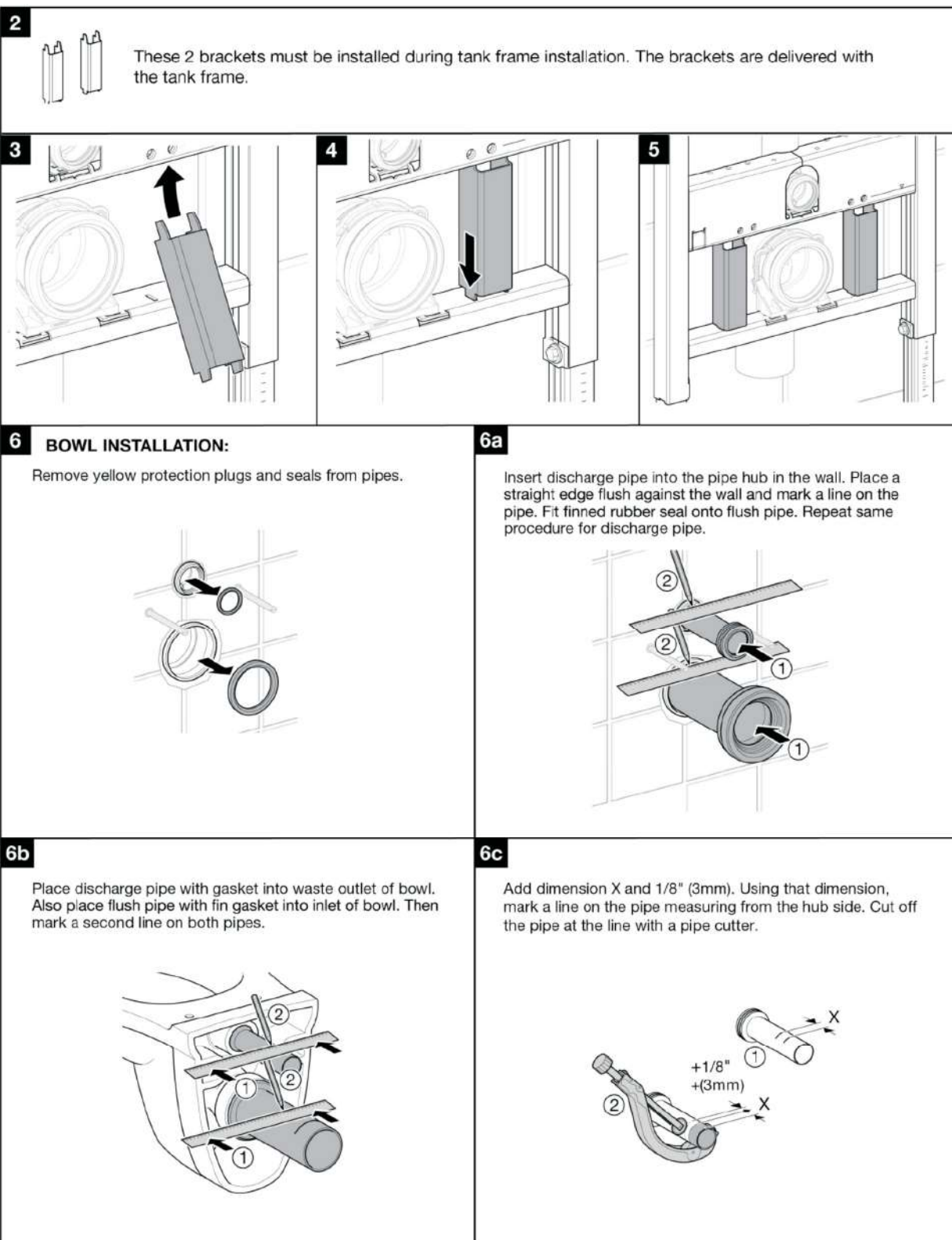
CONTEMPORARY
PROFILE

Hidden Nebula™ tanks feature seamless mounting for a minimalistic beauty.



CHIC
AFFORDABILITY

Clean, green, eco-friendly performance now comes at an attractive price.



FOR A BATH THAT'S FLUSH WITH STYLE

Immerse yourself in clean, green luxury with Fine Fixtures' ultramodern wall-hung toilets in the new Nebula™ collection. Our vision of efficiency and space-saving style, each model mounts to the wall with hidden plumbing for a sleek, compact appearance. For the perfect pairing, you can also select our powerful Vortex™ double-swish toilet bowl technology that delivers deeper sanitation while conserving water, reducing clogging, and polishing bowls to a pristine clean. Add soft-close seats and self-clean glazing, and your bath becomes home's centerpiece.

UNDERSTANDING OUR VORTEX™ DOUBLE-SWISH

Fine fixtures' pioneering Vortex™ technology promises maximum performance while maintaining modernist efficiency. Rimless bowls feature powerful washdown jets that direct water in a consistent cyclonic stream. The result is double the clean with every single flush.



REVOLUTIONARY DESIGN

Wall-hung toilet units feature powerful Vortex™ technology built right into the bowl.



CONTEMPORARY PROFILE

Hidden Nebula™ tanks feature seamless mounting for a minimalistic beauty.

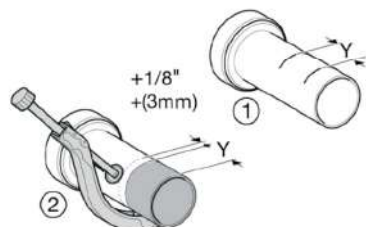


CHIC AFFORDABILITY

Clean, green, eco-friendly performance now comes at an attractive price.

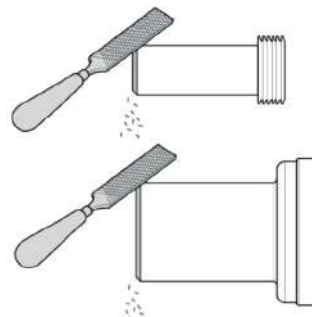
6d

Add dimension Y and 1/8" (3mm). Using that dimension, mark a line on the pipe measuring from the hub side. Cut off the pipe at the line with a pipe cutter.



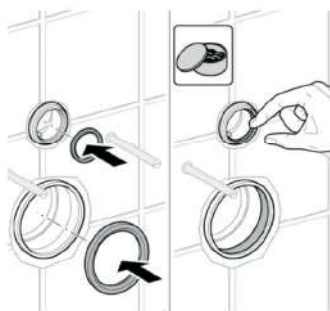
6e

Bevel the sharp edges as shown to assure a smooth insertion into the pipe hubs in the wall.



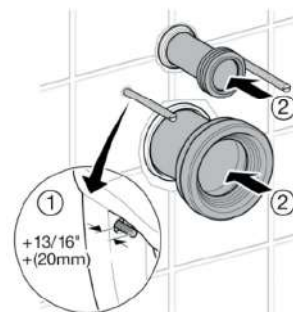
6f

Install both seals into the pipes in the wall. Lubricate seals with appropriate rubber seal lubricant.



6g

Remove protective sleeves from mounting rods. Determine protruding rod length for bowl installation. Install both pipes into the hubs in the wall.



6h

NOTE: DO NOT overtighten hex nuts!
Place bowl onto rods. Attach cap washer with nose up and facing forwards onto rods. Install washer and hex nuts, tighten loosely. Level bowl. Tighten hex nuts. Snap on the bolt caps.



6i

Seal gap around bowl with waterproof sealant.



FOR A BATH THAT'S FLUSH WITH STYLE

Immerse yourself in clean, green luxury with Fine Fixtures' ultramodern wall-hung toilets in the new Nebula™ collection. Our vision of efficiency and space-saving style, each model mounts to the wall with hidden plumbing for a sleek, compact appearance. For the perfect pairing, you can also select our powerful Vortex™ double-swish toilet bowl technology that delivers deeper sanitation while conserving water, reducing clogging, and polishing bowls to a pristine clean. Add soft-close seats and self-clean glazing, and your bath becomes home's centerpiece.

UNDERSTANDING OUR VORTEX™ DOUBLE-SWISH

Fine fixtures' pioneering Vortex™ technology promises maximum performance while maintaining modernist efficiency. Rimless bowls feature powerful washdown jets that direct water in a consistent cyclonic stream. The result is double the clean with every single flush.



REVOLUTIONARY DESIGN

Wall-hung toilet units feature powerful Vortex™ technology built right into the bowl.



CONTEMPORARY PROFILE

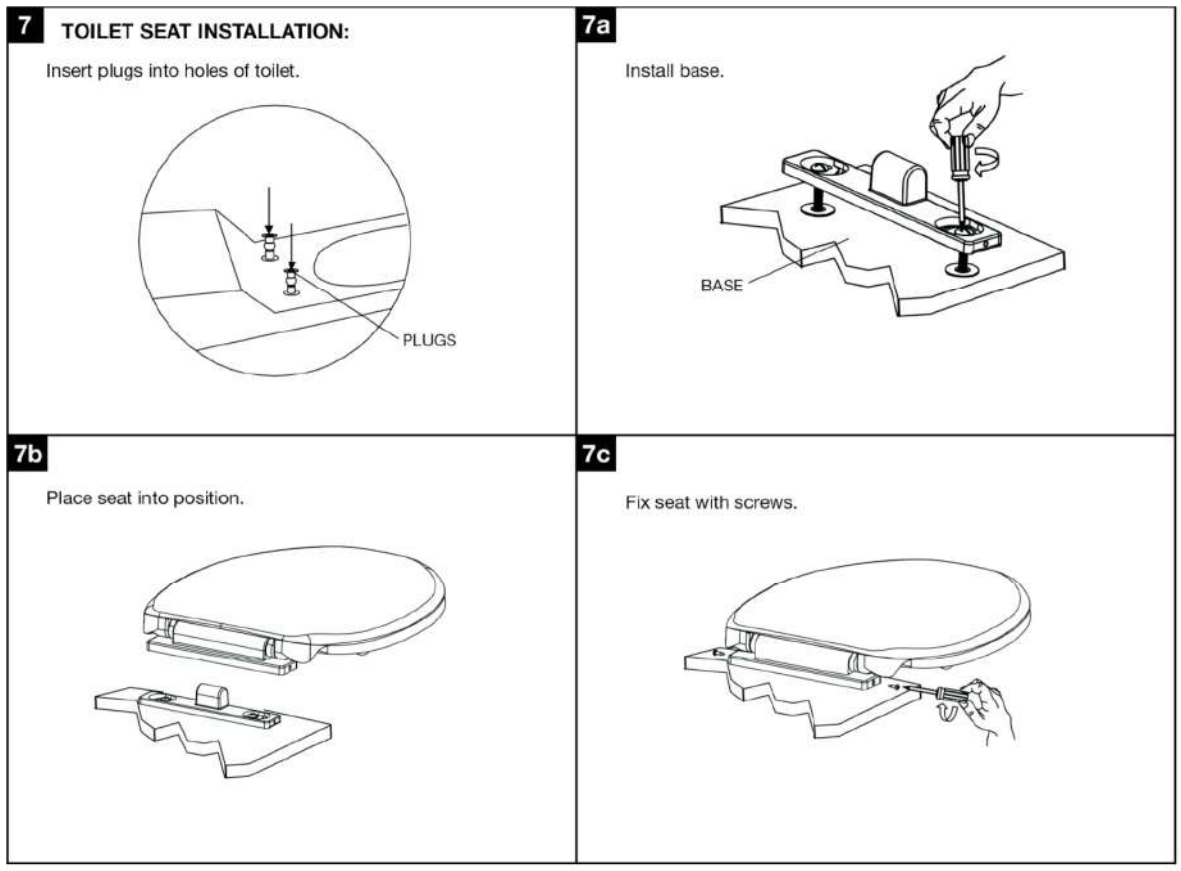
Hidden Nebula™ tanks feature seamless mounting for a minimalistic beauty.



CHIC AFFORDABILITY

Clean, green, eco-friendly performance now comes at an attractive price.

CONCEALED TANKS NEBULA™ COLLECTION



FOR A BATH THAT'S FLUSH WITH STYLE

Immerse yourself in clean, green luxury with Fine Fixtures' ultramodern wall-hung toilets in the new Nebula™ collection. Our vision of efficiency and space-saving style, each model mounts to the wall with hidden plumbing for a sleek, compact appearance. For the perfect pairing, you can also select our powerful Vortex™ double-swish toilet bowl technology that delivers deeper sanitation while conserving water, reducing clogging, and polishing bowls to a pristine clean. Add soft-close seats and self-clean glazing, and your bath becomes home's centerpiece.

UNDERSTANDING OUR VORTEX™ DOUBLE-SWISH

Fine fixtures' pioneering Vortex™ technology promises maximum performance while maintaining modernist efficiency. Rimless bowls feature powerful washdown jets that direct water in a consistent cyclonic stream. The result is double the clean with every single flush.



REVOLUTIONARY DESIGN

Wall-hung toilet units feature powerful Vortex™ technology built right into the bowl.



CONTEMPORARY PROFILE

Hidden Nebula™ tanks feature seamless mounting for a minimalistic beauty.



CHIC AFFORDABILITY

Clean, green, eco-friendly performance now comes at an attractive price.